

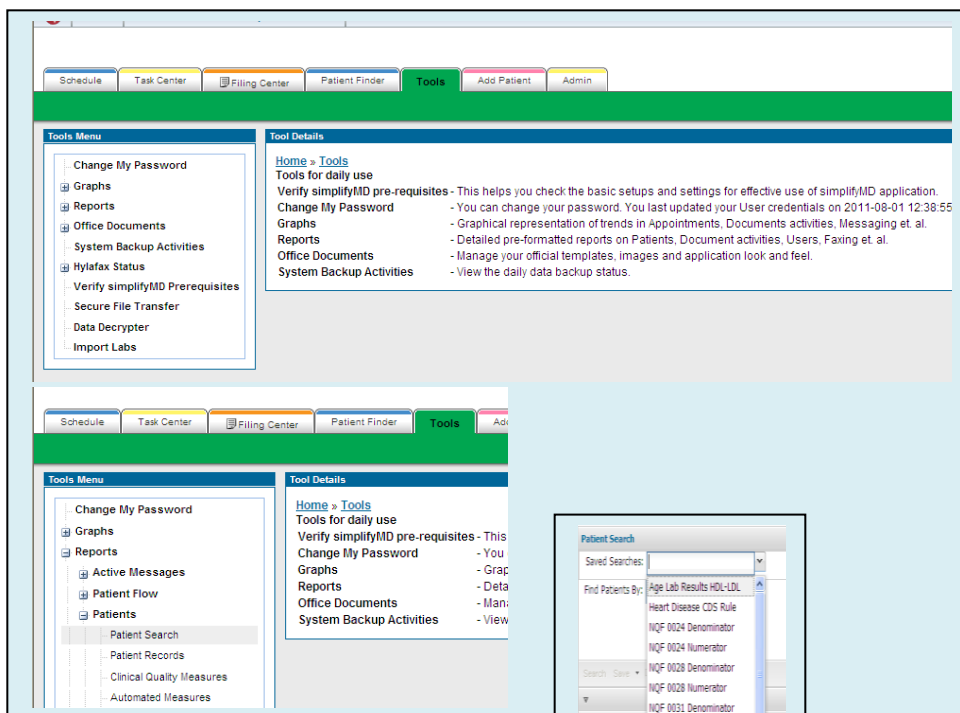
How to Create Clinical Quality Measures

170.304. (j) Calculate and Submit Clinical Quality Measures

simplifyMD uses a Compound Search feature located on the Tools Tab which drives this component for Meaningful Use.

All Clinical Quality Measures are met and Clinical Decision Support Rules and Alerts are constructed by entering discreet values on patients in Face Sheet Widgets: Patient Demographics in the Patient Profile, Enhanced Medications Widget, Medication Allergies Widget, immunization history, lab results, ICD9 codes in Patient Problem Widget, CPT codes in Past Procedures Widget, and by Checked-Out Patient Appointment history, meaning that in order to use the Patient Search Tool effectively, it is necessary to use the sMD Schedule by Checking In and Checking Out patient appointments (see the Previous and Upcoming Appointments Widget). All of these Widgets can be added to a simplifyMD Face Sheet Style.

The Compound Search tool as well as the Clinical Decision Support Tool, can be accessed from the Tools Tab.



Click on Tools

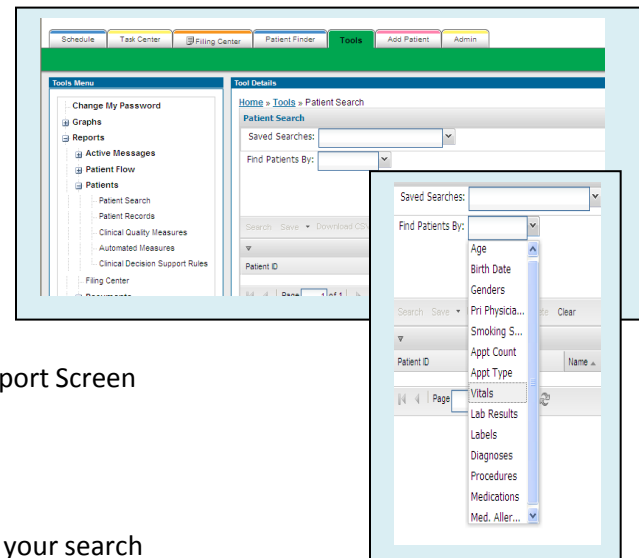
Click on Reports

Click on Patients to display-

- Patient Search-Configure New
- Patient Records-View Existing Patients, searchable list
- Clinical Quality Measures-
- Automated Measures-Dash Board
- Clinical Decision Support Rules-Configure New View existing
- Patient Alerts are built and stored from the Clinical Decision Support Screen

Patient Search Window

- Click to display all previously saved searches by title
- Click Find Patients by-dropdown to begin adding components of your search



- Patient Records will display list of the patients in the results window as you are building your search.

To Build a CQM for CORE Hypertension BP Management

Build Denominator

- Click Patient Search
- Find Patients by Appointment **any** , **Select Physician from Dropdown** select **any time**
And **Diagnosis**, Copy and Paste list of ICD Codes for Hypertension:
401.0,401.1,401.9,402.00,402.10,402.90,403.00,403.10,403.90,404.00,404.10,404.90,404.01,404.11,404.91,404.03,404.13,404.93
Or Select ICD from Dropdown
- **And Label 2 appointments**
- Select **Anytime**

Save your Search: Save as CORE BP Denominator Name of Physician

Build Numerator

- Click Patient Search
- Find Patients by Appointment **any** , **Select Physician from Dropdown** select **any time** plus
And, Diagnosis, Copy and Paste list of ICD Codes for Hypertension:
401.0,401.1,401.9,402.00,402.10,402.90,403.00,403.10,403.90,404.00,404.10,404.90,404.01,404.11,404.91,404.03,404.13,404.93
or Select ICD from Dropdown.
- Select **anytime**
- **And Label 2 appointments**
- **And Procedures G8359 anytime**

Save as CORE BP Numerator Name of Physician

Go to Clinical Quality Measures to Save the CQM and Display Ratios

- Click Clinical Quality Measures
- Select Numerator Search
- Select Denominator Search
- Select Physician Name
- Enter CQM Display Name
- Save As CQM

The Results will Transfer to Window Below along with Ratios

The screenshot shows a web application interface for Clinical Quality Measures. On the left is a 'Tools Menu' with various options like 'Change My Password', 'Reports', 'Patient Flow', 'Patients', 'Patient Search', 'Patient Records', 'Clinical Quality Measures', 'Automated Measures', 'Clinical Decision Support Rules', 'Filing Center', 'Documents', 'User Sessions', 'Audit Log', 'External Organizations', 'External Contacts', 'System Statistics', 'Documents', and 'Backup Activities'. The main area is titled 'Home - Tools - Automate Measure'. It contains a 'New Measure' form with fields for 'Measure Name', 'Numerator Search', 'Numerator Value', 'Denominator Search', 'Denominator Value', and 'Physician' (set to 'L. Chow'). Below the form is a table with columns 'Id', 'Name', 'Numerator', 'Denominator', and 'Percentage'. A yellow arrow points to the table.

Id	Name	Numerator	Denominator	Percentage
1	Maintain active medication list	181	200	90.5%
2	Record and chart changes in vital s...	161	181	89.0%
3	Provide patients with an electronic c...	17	17	100%
4	Record smoking status for patients i...	44	70	62.9%

Clinical Quality Measures Screen